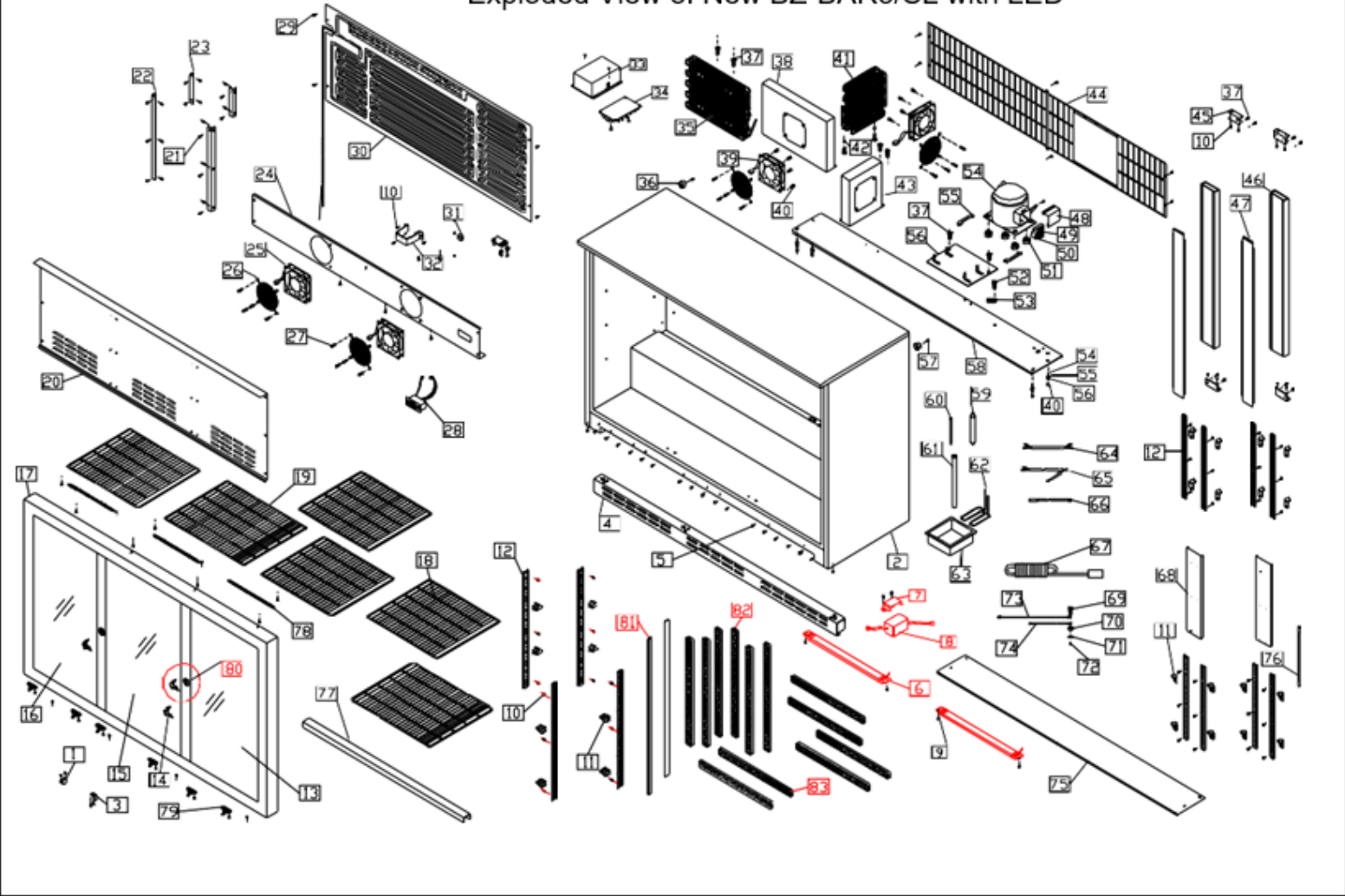


BAR 3SL (MKIII)

Exploded parts diagram



Exploded View of New BZ-BAR3/SL with LED



Part Number	Number	Description	Qty
W4-TOPBACKSTOP	1	Top Backstop	1
***	2	Cabinet	1
W4-BOTBACKSTOP	3	Bottom Backstop	1
***	4	Kick Plate (Front Grill)	1
***	5	Philips screw	33
W4-LED01	6	Led Light for Bar1 and Bar3	2
***	7	Transformer Holder	1
W4-LEDTRANSFORME	8	Transformer for Led Light	1
***	9	Philips screw	40
***	10	Philips screw	85
W4-CLIP01	11	Plastic Clip	24
W4-RACK01	12	Plastic Pilaster	12
W4-DOOR03R	13	Sliding Right glass door	1
BZ-BAR1-014	14	Key	4
W4-DOOR03M	15	Sliding Middle glass door	1
W4-DOOR03L	16	Sliding Left glass door	1
W4-RIM03	17	Sliding Door Surround	1
W4-SHELF02	18	Shelf	4
W4-SHELF04	19	Middle Shelf	2
***	20	Inner lid	1
***	21	Philips screw	36
***	22	Long item	2
***	23	Short item	2
***	24	Inner fan board	1
C5-AXIAL120MM	25	Evaporator Fan	2
***	26	Fan lid	4
***	27	Screw	8
W4-CONTROLLER03	28	Controller MKIII	1
W4-CONTROLLER04	28	Controller MKIII – Carel	1
BZ-BAR1-026	29	Philips screw	4
W4-EVAP03	30	Roll Bond Evaporator	1
W4-SWITCH01	31	Lamp switch	1
***	32	Steel Support	1
W4-FIXBOX	33	Plastic box for Transformer	1
M4-UCR140	34	Transformer for Controller MK III	1
W4-COND02	35	Condenser	1
***	36	Rubber Backstop	2
***	37	Screw	14
***	38	Condenser box	1
W4-FAN02	39	Condenser Fan	2
***	40	Screw	20

W4-COND01	41	Condenser	1
***	42	Hexagon nut	2
***	43	Condenser box	1
***	44	Back Cover	1
***	45	Fixture board	4
W4-BEAM	46	Plastic beam	2
W4-STEEL	47	Steel item	2
W4-COVER04R	48	Electrics cover	1
W4-STARTER04	49	Compressor Starter	1
***	50	Overheat and overload protector (2016>)	1
W4-CAP04		Capacitor for Compressor (2016>)	1
***	51	Rubber grommet	4
***	52	Screw	2
***	53	Wire clip	1
W4-COMP04	54	Compressor (2016>)	1
W4-BRACKET01	55	Compressor fixture item	2
***	56	Moving board	1
***	57	Philips screw	2
***	58	Compressor Board	1
W4-FILTER01	59	Filter Drier	1
***	60	Process tube	1
***	61	Vaporizing Coil	1
***	62	Plastic tube	1
W4-TRAY01	63	Water box	1
***	64	Short wire sheath	1
***	65	Fan wire	1
W4-SENSOR01	66	Temperature sensor	1
***	67	Power Wire and Plug	1
***	68	Fix item	2
***	69	Screw	1
***	70	Spring washer	1
***	71	Flat washer	1
***	72	Hexagon nut	1
***	73	Long earth wire	1
***	74	Short earth wire	1
***	75	Front board	1
***	76	Cu Connect tube	1
***	77	Sliding Door Guide (Aluminum item) for BZ-BAR3/SL	2
W4-SPRING01	78	Spring	3
W4-ROLLER02	79	Door wheel	6
W4-KEY01	80	Lock and Key for Bar2/SL and Bar3/SL Sliding Door	2
***	81	Black Gaskets for Sliding Door	3
***	82	Long Brushes for Sliding Door	6
***	83	Short Brushes for Sliding Door	6

*** Please contact Spares for assistance ***