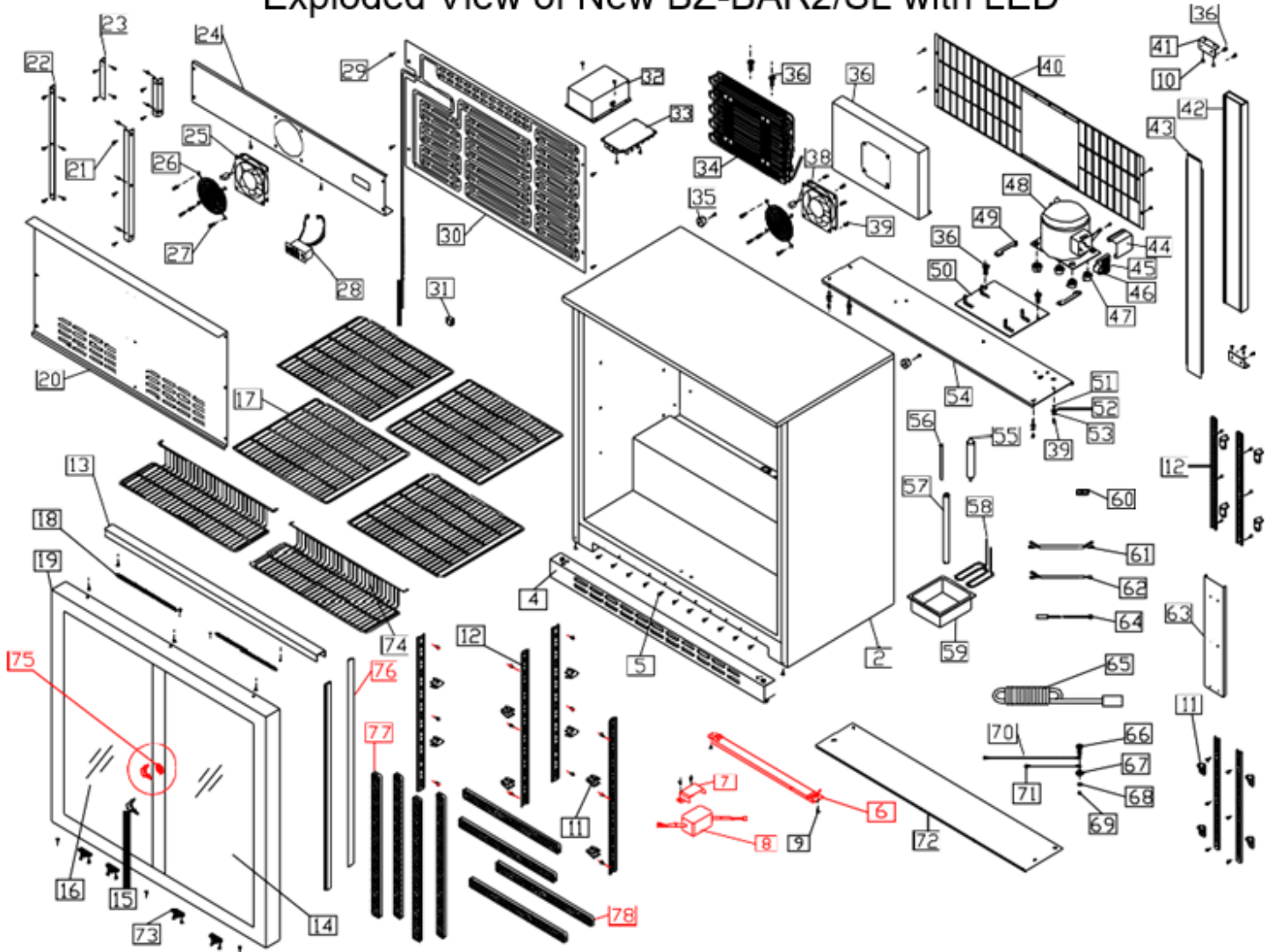


BAR 2SL (MKIII)

Exploded parts diagram



Exploded View of New BZ-BAR2/SL with LED



Part Number	Number	Description	Qty
***	2	Body	1
***	4	Kick Plate (Front Grill)	1
***	5	Philips screw	19
***	6	Led Light for Bar2	1
***	7	Transformer Holder	1
W4-LEDTRANSFORME	8	Transformer for Led Light	1
***	9	Philips screw	40
W4-CLIP01	11	Plastic Clip	16
W4-RACK01	12	Plastic Pilaster	8
***	13	Sliding Door Guide (Aluminum item) for BAR2/SL	2
W4-DOOR13	14	Sliding Right glass door	1
W4-KEY	15	Key	2
W4-DOOR14	16	Sliding Left glass door	1
W4-SHELF02	17	Shelf	4
W4-SPRING01	18	Spring	2
***	19	Sliding Door Surround	1
***	20	Inner lid	1
***	21	Philips screw	22
***	22	Long item	2
***	23	Short item	2
***	24	Inner fan board	1
C5-AXIAL120MM	25	Evaporator Fan	1
***	26	Fan lid	2
***	27	Screw	8
W4-CONTROLLER03	28	Controller MKIII	1
W4-CONTROLLER04	28	Controller MKIII – Carel	1
***	29	Philips screw	4
W4-EVAP02	30	Roll Bond Evaporator	1
W4-SWITCH01	31	Lamp switch	1
W4-FIXBOX	32	Plastic box for Transformer	1
M4-UCR140	33	Transformer for Controller	1
W4-COND02	34	Condenser	1
***	35	Rubber Backstop	2
***	36	Screw	8
***	37	Condenser box	1
W4-FAN02	38	Condenser Fan	1
***	39	Screw	12
***	40	Back Cover	1
***	41	Fixture board	2
W4-BEAM	42	Plastic beam	1

W4-STEEL	43	Steel item	1
W4-COVER02R	44	Electric cover	1
W4-STARTER02	45	Starter	1
W4-OVERLOAD02	46	Overheat and overload protector	1
W4-CAP02		Capacitor for TG1111Y Compressor	1
BZ-BAR1-044	47	Rubber grommet	1
W4-COMP02	48	Compressor	1
W4-BRACKET01	49	Compressor fixture item	4
***	50	Moving board	1
***	51	Hexagon nut	4
***	52	Flat washer	12
***	53	spring washer	12
***	54	Compressor Board	1
W4-FILTER01	55	Filter and Drier	1
***	56	Process tube	1
***	57	Plastic tube	1
***	58	Vaporizing Coil	1
W4-TRAY01	59	Water box	1
***	60	Wire clip	1
***	61	Short wire sheath	1
***	62	Fan wire	1
***	63	Fix item	1
W4-SENSOR01	64	Temperature sensor – MKIII (Not Carel)	1
***	65	Power Wire and Plug	1
***	66	Screw	1
***	67	Spring washer	1
***	68	Flat washer	1
***	69	Hexagon nut	1
***	70	Long earth wire	1
***	71	Short earth wire	1
***	72	Front board	1
W4-ROLLER02	73	Door wheel	4
W4-SHELF02B	74	ETL Bottom Shelf for Bar2	2
W4-KEY01	75	Lock and Key for Bar2/SL and Bar3/SL Sliding Door	1
***	76	Black Gaskets for Sliding Door	2
***	77	Long Brushes for Sliding Door	4
***	78	Short Brushes for Sliding Door	4

*** Please contact Spares for assistance ***